

INTRODUCING

 GLIDESCOPE® CORE™

by anandic



SEE MORE.
DO MORE.

 VERATHON®

INTRODUCING
GLIDESCOPE CORE, THE MOST
COMPREHENSIVE AND FLEXIBLE
AIRWAY VISUALIZATION SYSTEM
FOR VIDEO LARYNGOSCOPY,
BRONCHOSCOPY AND MULTIMODAL
AIRWAY PROCEDURES.

GlideScope® Core™ is an all-in-one system offering immediate access to the tools you need to visualize the airway and tracheobronchial tree. Designed around a 10" high-definition, touchscreen monitor and comprehensive workstation, GlideScope Core delivers elevated visibility and improved workflow. Discover how GlideScope Core gives you the power to **see more—and do more.**

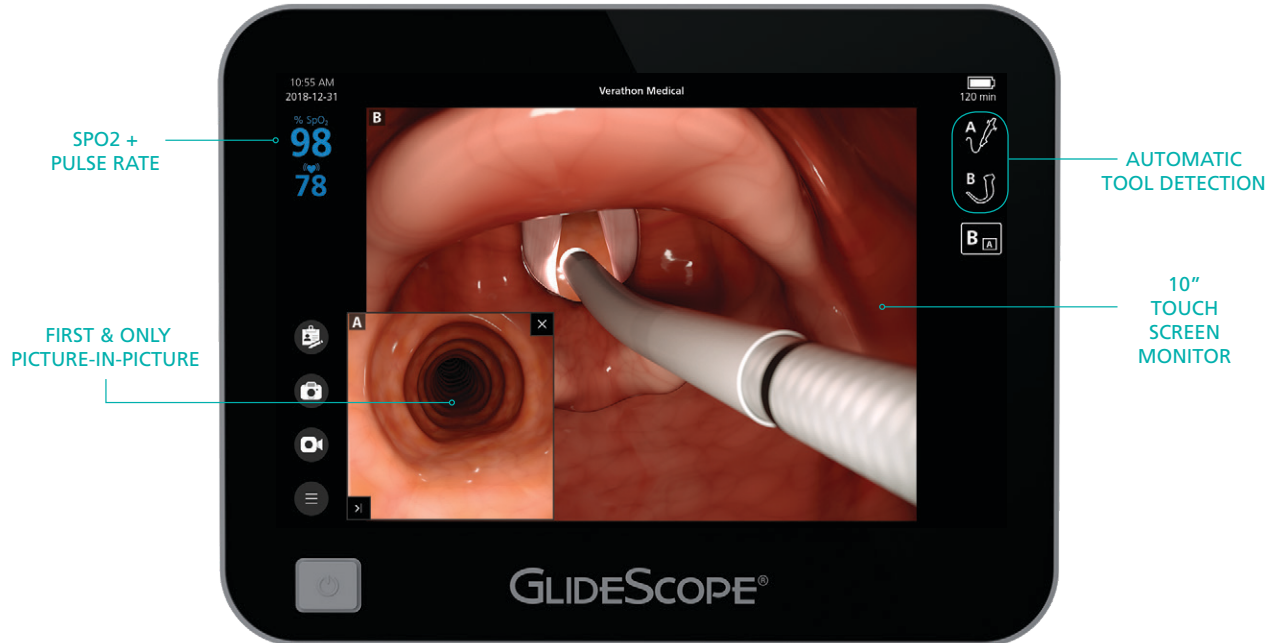


GlideScopeCore.com

ALL NEW GLIDESCOPE CORE

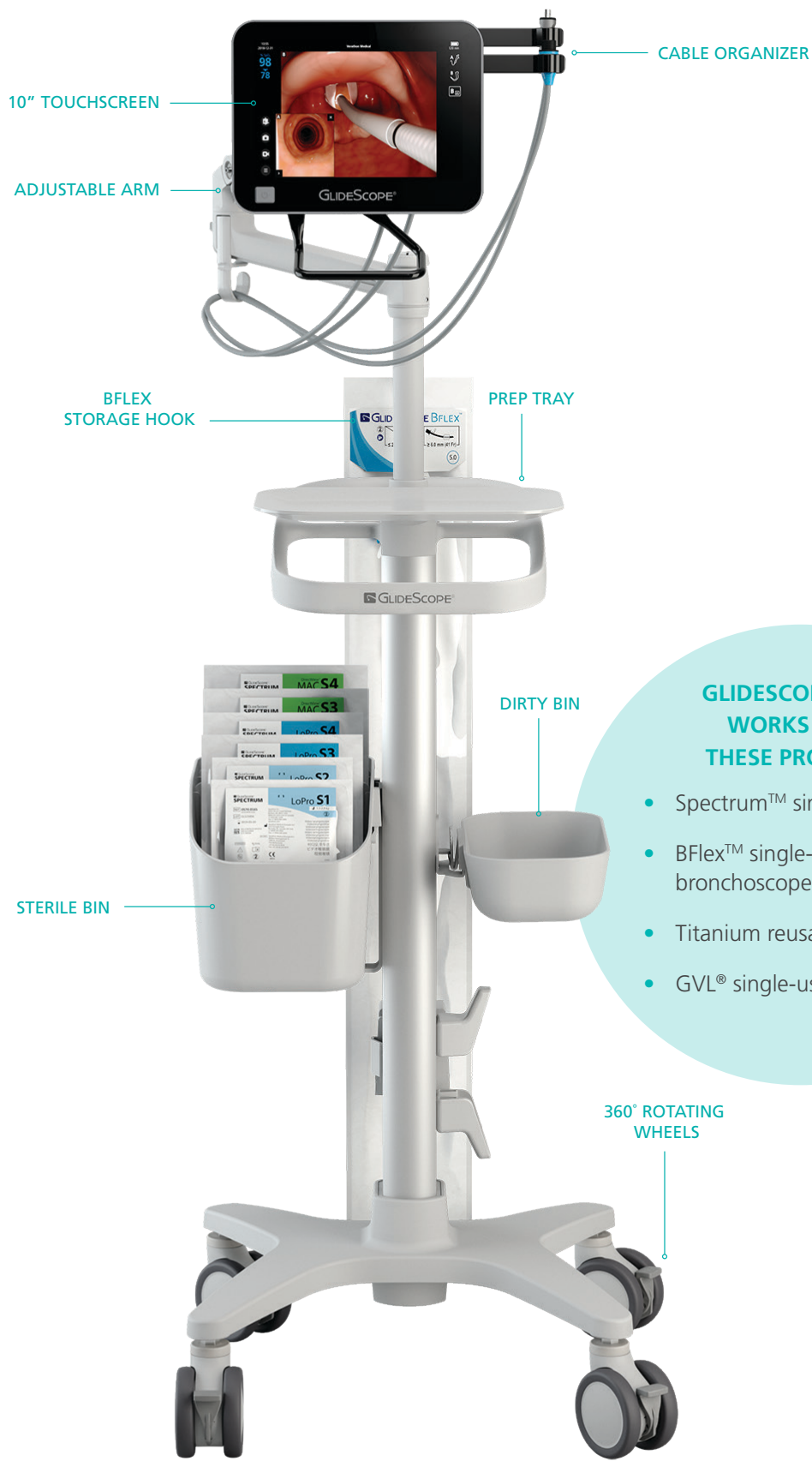
SEE MORE

GlideScope® Core™ is the first and only airway visualization system to offer live picture-in-picture imaging, giving you the power to view the airway via a GlideScope video laryngoscope and BFlex™, a single-use flexible bronchoscope—*simultaneously*.



GLIDESCOPE CORE PREMIUM FEATURES

- 10" high-definition touchscreen monitor
- Dual connection ports for two video inputs
- Picture-in-picture views—*simultaneously*
- Still image and video capture
- Patient notes annotation feature
- Video playback and image gallery
- SpO2 and pulse rate reading on screen, and on captured videos
- 180° image rotation for face-to-face intubations and training
- HDMI out port for external video display



**GLIDESCOPE CORE
WORKS WITH
THESE PRODUCTS**

- Spectrum™ single-use blades
- BFlex™ single-use flexible bronchoscope
- Titanium reusable blades
- GVL® single-use stats

DO MORE

WORKSTATION

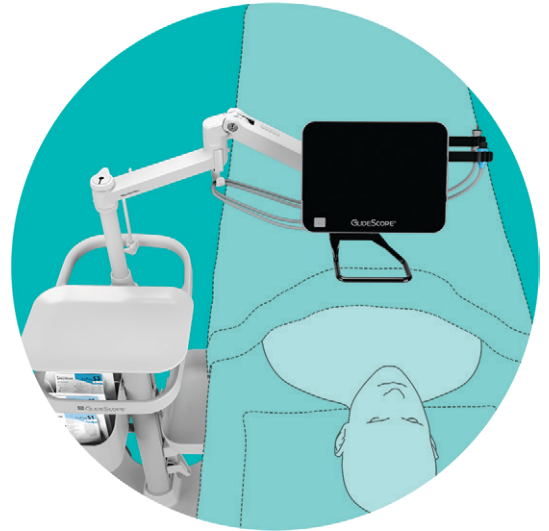
The ideal workstation is one that lets you focus more on your patient and less on your equipment. The GlideScope® Core™ system adapts to your space and offers the flexibility to fully focus on your patient. The tools are all neatly organized and close at hand, while the adjustable arm ensures the monitor is always in clear view.

- Mounted on an adjustable arm, the GlideScope Core monitor can be positioned over your patient for optimal viewing in your direct line of sight
- Convenient prep tray ensures easy access to your airway tools
- Hook attachment to store BFlex bronchoscopes
- Sterile bin organizes your GlideScope blades, excess cables and airway management tools in one place to cover a wide range of patients from neonates to large adults
- Dirty bin is designed to support infection control initiatives and house all used equipment for easy disposal
- The organizer attachment keeps your cables ready by the monitor so you can connect your blade easily and start the procedure quickly

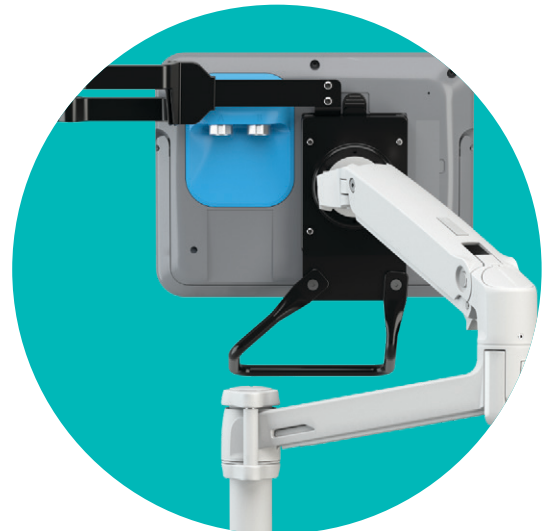
TOOLS

GlideScope Core is the first airway visualization system with dual connection ports and simultaneous live picture-in-picture imaging for GlideScope video laryngoscopes and bronchoscopes. No more having to use multiple systems, and vendors, for video laryngoscopy, bronchoscopy and multimodal airway procedures. Your airway visualization system now does more by supporting bronchoscopy-assisted procedures in the OR, ICU and ED.

Plus, GlideScope Core is compatible with the full line of GlideScope visualization tools—reusable and single-use video laryngoscopes, single-use bronchoscopes and single-use stats.



ADJUSTABLE ARM POSITIONS
EASILY OVER PATIENT



DUAL CONNECTION PORTS WITH
QUICKCONNECT™ TECHNOLOGY

WHEN IT COMES TO YOUR AIRWAY
AND BRONCHOSCOPY VISUALIZATION
NEEDS, THE MORE TOOLS YOU HAVE
AT HAND THE BETTER.

COMPATIBILITY

GlideScope® Core™ is compatible with the full line of GlideScope visualization tools:

- Spectrum™ single-use blades
- BFlex™ single-use flexible bronchoscope
- Titanium reusable blades
- GVL® single-use stats



SPECTRUM SINGLE-USE BLADES



BFLEX SINGLE-USE FLEXIBLE BRONCHOSCOPE



TITANIUM REUSABLE BLADES



GVL SINGLE-USE STATS

 GLIDESCOPE® CORE™



Not all Verathon Inc. products shown are available for commercial sale in all countries.

Learn more at GlideScopeCore.com

Verathon Inc.
20001 North Creek Parkway
Bothell, WA 98011
USA
Tel: +1 800 331 2313
(USA & Canada only)
Tel: +1 425 867 1348
Fax: +1 425 883 2896

Verathon Medical (Europe) B.V.
Willem Fenengastraat 13
1096 BL Amsterdam
The Netherlands
Tel: +31 (0) 20 210 30 91
Fax: +31 (0) 20 210 30 92


anandic
MEDICAL SYSTEMS

ANANDIC MEDICAL SYSTEMS AG
Stadtweg 24, 8245 Feuerthalen
www.anandic.com
info@anandic.com
Tel. 0848 800 900